



Let **UK** Home

3 Bedrooms

Flat

**Located
in Birmingham**

£1,950 Per Month



pmadmin@letukhome.co.uk

<https://www.letukhome.co.uk/>

0121 828 8955



Bird Close Birmingham

B12 9AP



Let UK Home are excited to offer this stunning three-bedroom, two storey property situated at Belgrave Middleway, Birmingham.

Property Features

- Open-plan dining and family area
- Ground floor W/C
- Ground floor storage
- Patio doors
- Three bedrooms
- Family bathroom
- Single Garage

Property Summary

As you enter the hall, relax or entertain in the fantastically designed spacious open-plan dining and living area. An L shaped kitchen is located adjacent to the living area that features a convenient separate utility room.

A W/C, storage room and central French doors to the garden perfectly finish the ground floor.

Upstairs, a family bathroom is shared by a well-proportioned single and double bedroom to the rear of the home overlooking the garden. The master bedroom, located to the front, offers an en-suite bathroom and wardrobe space.

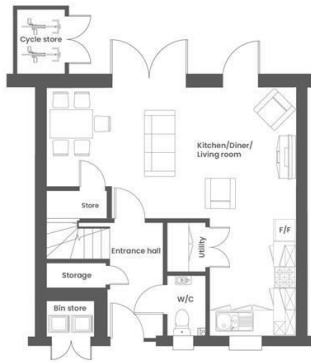
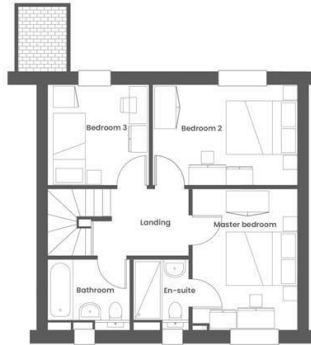
Bird Close Birmingham

£1,950 Per Month

- Ground Floor & 1st Floor
- Parking
- EPC Rating: B

- The Gym
- Concierge Service





Let **UK** Home

Let UK Home

JQ Modern 120 Vyse St

Birmingham

B18 6NF

0121 828 8955

pmadmin@letukhome.co.uk

Council Tax Band: C

Local Authority:

Agents Note: Whilst every care has been taken to prepare these particulars, they are for guidance purposes only. All measurements are approximate and are for general guidance purposes only and whilst every care has been taken to ensure their accuracy, they should not be relied upon and potential buyers/tenants are advised to recheck the measurements.

Energy Efficiency Rating		Current	Potential
Very energy efficient - lower running costs			
(92 plus) A			97
(81-91) B		86	
(69-80) C			
(55-68) D			
(39-54) E			
(21-38) F			
(1-20) G			
Not energy efficient - higher running costs			
England & Wales	EU Directive 2002/91/EC		

<https://www.letukhome.co.uk/>